




# HP SKOLU RISINĀJUMI

## MĀCĪT UN MĀCĪTIES BEZ ROBEŽĀM

Aiga Šica  
HP Inc/Latvija  
[aiga.sica@hpmdp.com](mailto:aiga.sica@hpmdp.com)





# Teaching and learning, **has changed forever**

Technology has never been more important for learning

Teachers learned new ways to teach

Students learned new ways to learn

Learning happens everywhere, not just in the classroom.

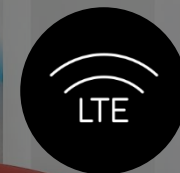
Digital learning activities are more varied and complex



Light &  
durable



Large screens



Enhanced  
connectivity

Increased durability



Enhanced connectivity



Large screens

## SELECT LETTER TO VIEW PHOTO

A

[HP Elite Slice<sup>1</sup> G2](#)  
[Teams Rooms endpoint](#)

B

[HP EliteDisplay](#)  
[Confidence Monitor](#)

C

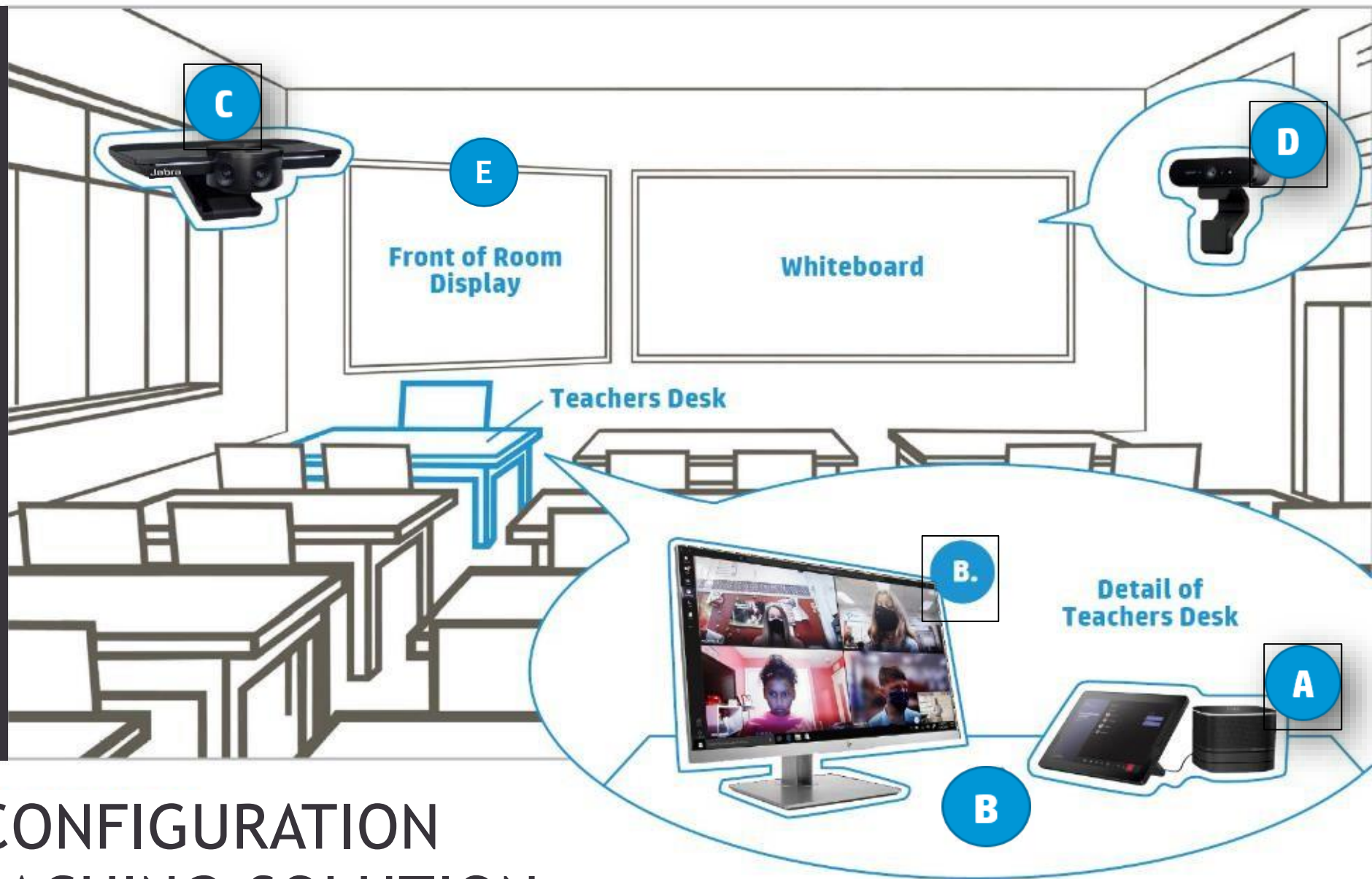
[Jabra Panacast](#)  
[Teacher Camera](#)

D

[HP320/325 FHD](#)  
[Content Camera](#)

E

[Display / PJ](#)  
[Front of Room Display](#)



# CLASSROOM CONFIGURATION OF HYBRID TEACHING SOLUTION



What we are announcing:

# Solutions built tough and designed for a Blended Learning world.



HP Probook 44x 14" G9



HP ProBook Fortis 14"  
G9 & G10 PCs



HP Pro x360 Fortis 11"  
G9 & G10 PCs



HP Probook x 360 4xx  
13"/14 G9



HP 320/325  
FHD Webcam<sup>1</sup>



HP Confidential. For HP and Partner use with Customers under HP CDA only.

# Introducing HP Fortis

Built strong. Built to last.  
Built for everybody.

Latin for strong,  
Fortis embodies  
the strength and  
durability of  
HP devices  
built for active  
and mobile users.



HP Confidential. For HP and Partner use with Customers under HP CDA only.



# Built tough. Designed for Blended Learning.

## Textured Surface

Easier to grip and hides fingerprints and minor dirt smudges

## Light and Mobile

Starts from:  
1.36 kgs / 3 lbs

## Reinforced Ports

Reinforced power and USB-C® ports limits damage from tugged cables

## Protect What's Inside

Mechanically reinforced corners and tightly bonded, co-molded rubber trim absorbs shocks<sup>2</sup>

## Improved

## Durable Keyboard

Pick-resistant anchored skirt keyboard resists 350 ml spills<sup>21</sup>

## New

## Safety and Protection

Metal shield protects the battery from puncture and swelling



HP Confidential. For HP and Partner use with Customers under HP CDA only.



# HP Pro x360 Fortis 11" – Designed to support many learning styles

## Always ready to ignite creativity

### Supports many learning styles

Students can realize their full potential by choosing the mode and method of interaction that best suits them and their assignment.



HP Pro x360 Fortis 11" G9 & G10



Windows 11

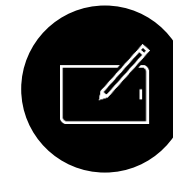


HP Confidential. For HP and Partner use with Customers under HP CDA only.



Optional world-facing  
5 MP camera<sup>13</sup>

NEW



Rechargeable pen  
with reinforced tip<sup>13</sup>

NEW



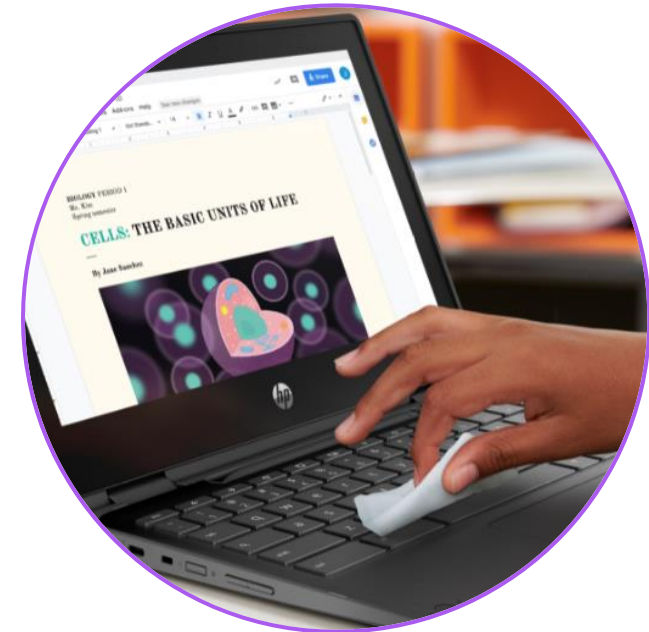
Water-resistant  
pen garage<sup>24</sup>



# Sanitizable notebooks

Germes are everywhere. But they don't have to live on your PC.

Chassis, keyboard and display can be disinfected with select common household wipes.<sup>4</sup>



HP Confidential. For HP and Partner use with Customers under HP CDA only.



# Built for the rigors of learning from anywhere

120,000 Hour  
Total Test Process<sup>3</sup>



Drop tested from 30in onto concrete and 48in onto plywood<sup>5</sup>

Increased tumble test from 200 to 1000 cycles

Passes 19 MIL-STD 810H<sup>2</sup> tests vs 13 tests in the prior gen.



HP Confidential. For HP and Partner use with Customers under HP CDA only.



# See their work clearly, wherever they are



Brighter<sup>22</sup> anti-glare displays



HP Confidential. For HP and Partner use with Customers under HP CDA only.



New  
on all 14"  
Fortis  
devices



# HP PROBOOK 400 SERIES G9

ESSENTIAL FEATURES IN A MODERN DESIGN IDEAL FOR GROWING BUSINESSES

MAR '22



## A DESIGN FOR HYBRID WORKSTYLES

Whether in the same room or miles apart, bring your teams together with tools to keep interactions open and productive. The ultra-narrow bezel maximizes screen size while lightweight aluminum materials provide an easy-to-carry, sleek design.



## PERFORMANCE FOR EVERYDAY BUSINESS

Equipped with the 12th gen Intel® processor<sup>1</sup>, multiple graphics options<sup>3</sup>, and fast, upgradeable dual channel SODIMM memory<sup>4</sup>, the HP ProBook 400 Series G9 drives performance with long battery life and high-speed solid-state drives.



## WORK WITH COMFORT AND PEACE OF MIND

Help protect your PC from devastating malware and hacking with multi-layered and constantly evolving HP Wolf Pro Security Edition<sup>5</sup> on this durable and serviceable laptop built for your growing business. Protect your data against visual hacking with HP Sure View Reflect (14")<sup>6</sup>, an optional integrated privacy screen.



12<sup>th</sup> Gen Intel® processor<sup>1</sup>



87% screen-to-body ratio with narrow bezel and larger screen



Long battery life with HP Fast Charge<sup>7</sup>



Undergoes MIL-STD 810H tests to guarantee durability<sup>8</sup>

# HP PRO x360 435 G9

SLEEK, POWERFUL AND HIGHLY SECURE CONVERTIBLE PC

APR '22



## CONVERTIBLE DESIGN FOR VERSATILITY

The slim and sleek HP Pro x360 435 adapts to your workday. Four use modes enable you to easily create, present, and collaborate in a comfortable way, wherever your office may be.



## PERFORMANCE AND PRODUCTIVITY

Equipped with the latest AMD processor<sup>2</sup>, the HP Pro x360 435 drives productivity with long battery life and Wi-Fi 6E<sup>20</sup> with HP Extended Range Wireless LAN<sup>24</sup>. Single cable USB-C<sup>®</sup> docking provides flexibility for your essential accessories.<sup>27</sup>



## BUILT FOR BUSINESS WITH SECURITY

HP Wolf Security for Business creates a hardware-enforced, always-on, resilient defense. From the BIOS to the browser, above, in, and below the OS, these constantly evolving solutions help protect your PC from modern threats.<sup>5</sup>



Next gen AMD<sup>®</sup> processor<sup>2</sup> with up to 32GB memory and up to 2TB storage



Wi-Fi 6E<sup>20</sup> and HP Extended Range Wireless LAN.<sup>24</sup>



1000-nit panel with HP Sure View Reflect<sup>6</sup>



HP Wolf Security for Business<sup>5</sup>



# Collaborate and create with ease



## Plug and Show

Just plug in the USB-A, clip on the webcam, and it will auto-adjust to your surroundings.



## Look like you look

Enjoy a crisp image that makes you look good, coupled with a 66° wide-angle webcam for a natural conversational feel.



## Create digital materials

You can easily clip the webcam on your monitor or elsewhere, then easily adjust the position for your picture-perfect setup.

HP 320/325 FHD Webcam<sup>1</sup>



HP Confidential. For HP and Partner use with Customers under HP CDA only.

# Introducing HP All-in-one

HP ProOne 400  
HP Elite One 600/800  
Offered in 19.5", 23.8" & 27"

HP Presence

For when you're in the room



HP Confidential. For HP and Partner use with Customers under HPCDA only.



# Touch. Join. Collaborate

## HP Presence Conferencing All-in-One

Designed for people to connect in focus rooms



One touch  
**zoom**rooms  
meeting launch<sup>3</sup>

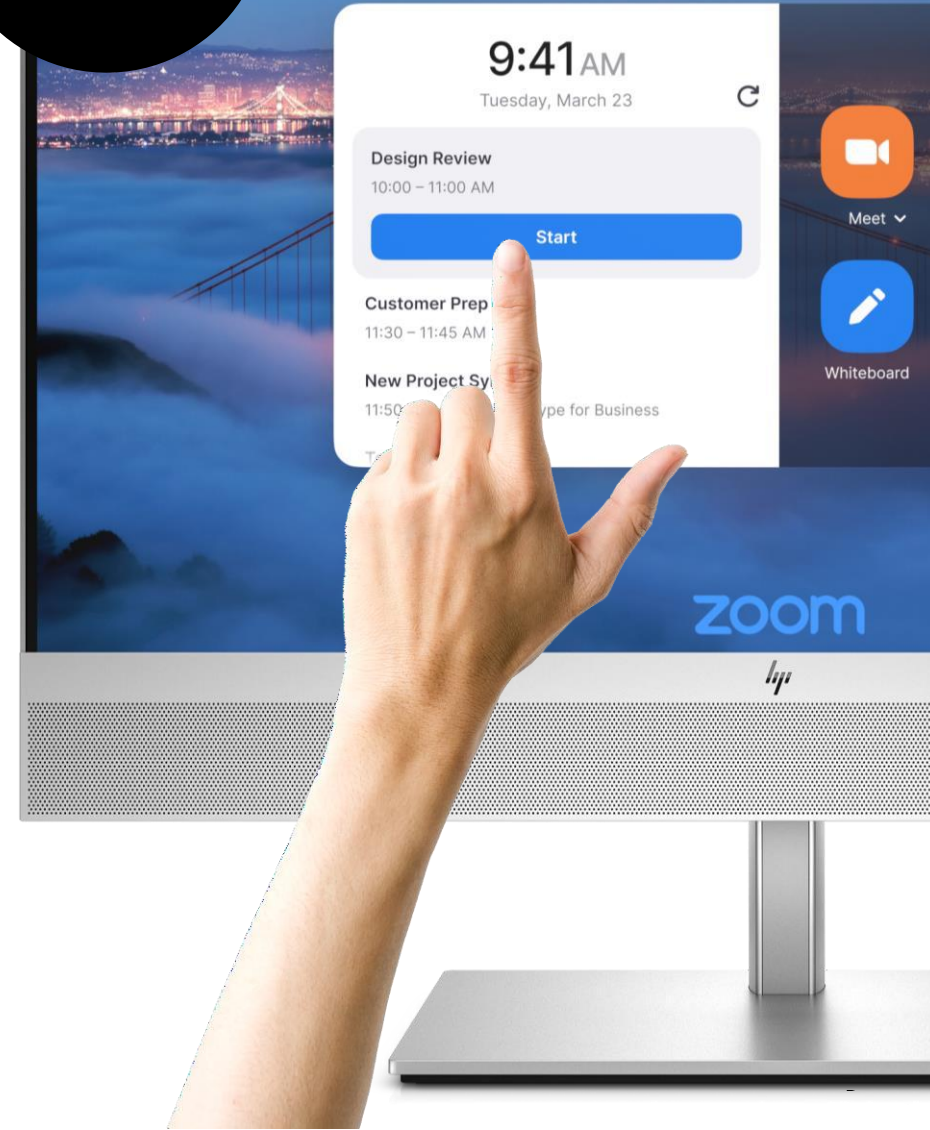


HP Presence Audio  
and Video solutions<sup>5</sup>



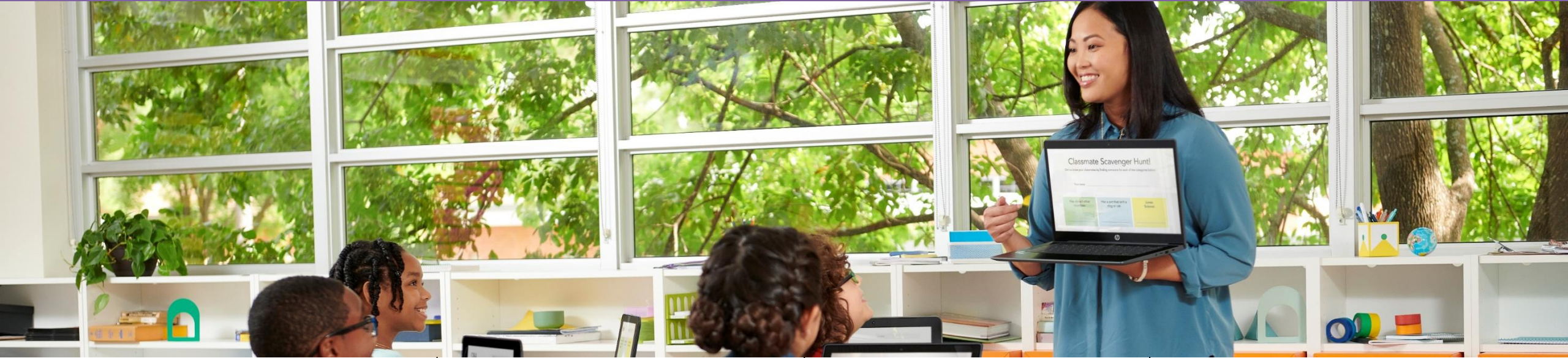
Wireless PC  
screen share

No more  
untangling  
cables to  
connect



HP Confidential. For HP and Partner use with Customers under HPCDA only.

# Teacher and IT needs beyond the box



## Modern Classroom Manager

Reduce technology-related distractions



## Connected & Protected

Enhanced endpoint security to protect students and their data



## Serviceability

Devices designed to be self-maintained



## Be seen and heard clearly

To create quality digital education resources and collaborate with others



HP Confidential. For HP and Partner use with Customers under HP CDA only.



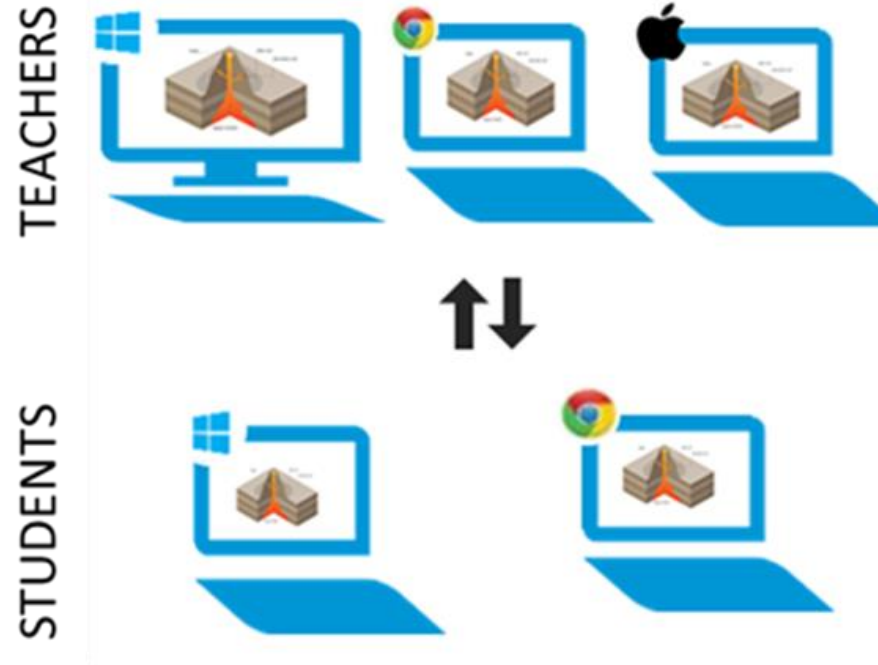
# HP Classroom Manager 4.0 Peer-to-Peer:

Sold Stand-Alone or Student Client Already Included in HP School Pack

## Why HP Classroom Manager Peer-to-Peer:

- Perpetual licensing, no annual subscriptions, no maintenance contracts, no support contracts
- Windows: 1 license per device  
Chrome: 1 license per concurrent user
- Easy to deploy/maintain
- Pull classroom rostering from top SiS's up-to once per day including Google Classroom and ClassLink.
- Optimal Performance
- Secure, no cloud, everything stays within the School's Environment

## Supported Peer-to-Peer Ecosystem:



## Tools for IT Admins:

### Monitor and access devices

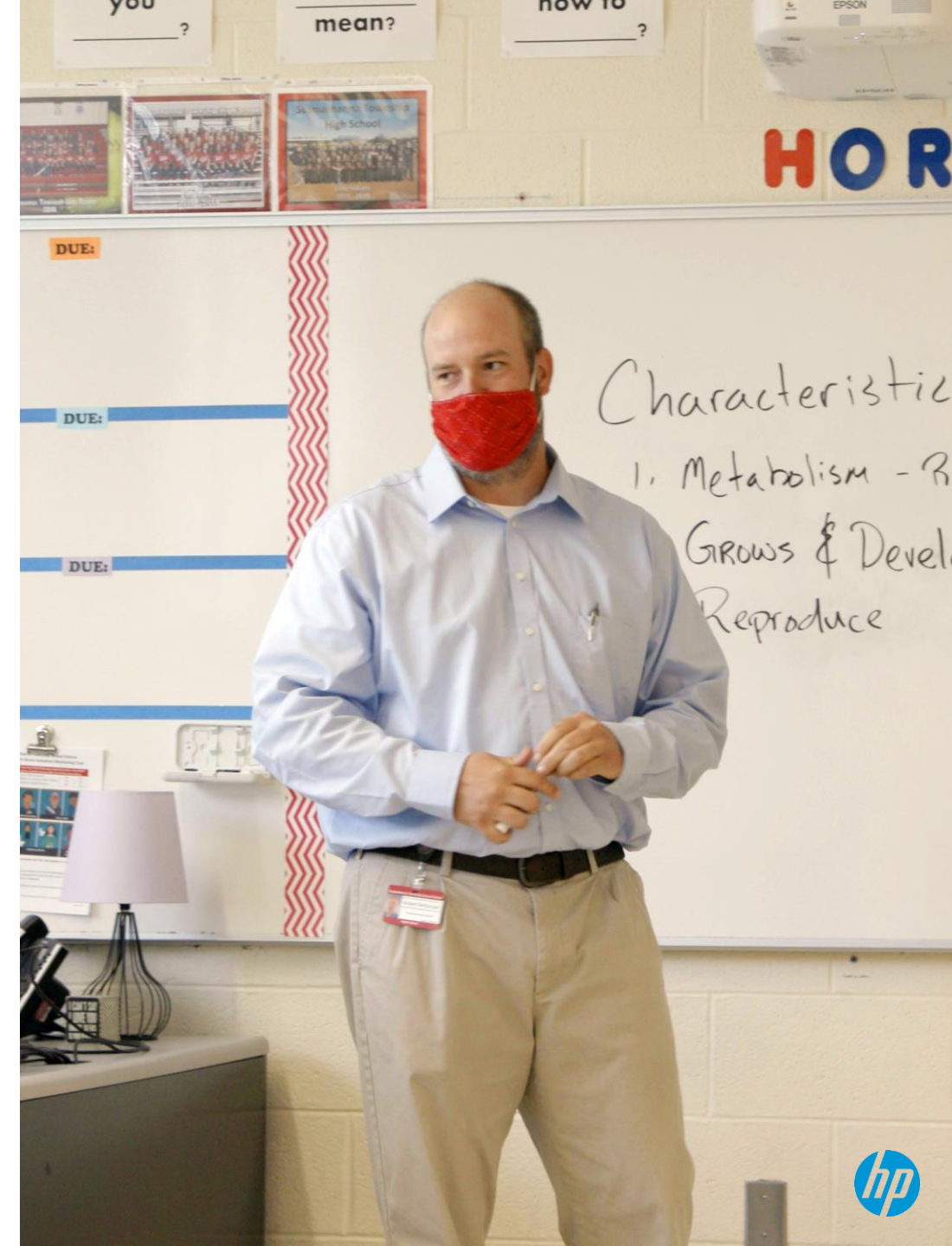
- Monitor activity and usage
- Deploy and update software (Windows)
- Security, firewall, and anti-virus (Windows)
- PC inventory and registry editing (Windows)

### Easily support teachers

- Message teachers 1:1 or en masse
- Provide support to teachers

# Key Features (What Teachers Love):

- Remotely monitor student screens to keep students on track
- Remotely lock/unlock student devices when devices shouldn't be used
- Real-time formative assessment to quickly gauge subject comprehension
- Restrict website/windows app access by lesson/by class/by day
- Remote launch websites/windows apps to avoid "technology delays"
- Share teacher screen/applications
- Remote control student devices
- Private and Group Chat
- Social/Emotional wellness checks







# PALDIES!

Aiga Šica  
HP Inc/Latvija  
[aiga.sica@hpmdp.com](mailto:aiga.sica@hpmdp.com)